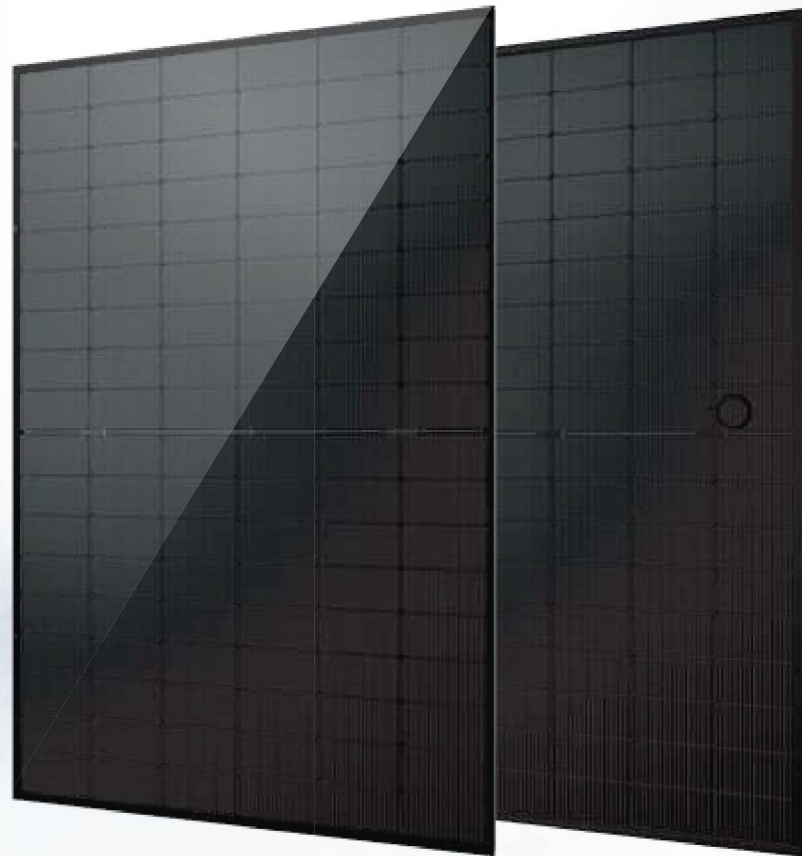


Black Series  
BHI COM-V1(BK)



Product Range **320W**

N-Type Full Black Monocrystalline



**320W**

Maximum Power Output

**0~+5W**

Positive Power Tolerance

**22.79%**

Maximum Efficiency

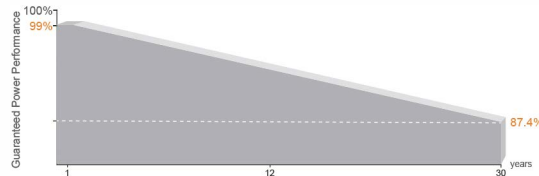
**Linear Performance Warranty**

**25** Year Product Warranty

**30** Year Linear Power Warranty

**<1%** First Year Power Degradation

**<0.4%** Year 2-30 Power Degradation



**Certifications**

Quality Management System and Product Certification.

IEC61215(2021), IEC61730(2023), IEC61701

IEC61215-2 (bifaciality): 2021

ISO9001:2015: Quality Management System

ISO14001:2015: Environment Management System

ISO45001:2018: Occupational health and safety management systems



**MBB Half-Cut Solar Cell**

120 Cells

**Higher Module Conversion Efficiency**

Higher module output up to 450W with module efficiency up to 22.79%.

**Low-Light Performance**

Advanced glass and surface texturing allows for excellent performance in low-light environments.

**Transparent Dual-glass Design**

Excellent fire rating, with better temperature coefficient.

**Higher Power Output**

Module power increases 5-25%, generally bringing significantly lower LCOE and higher IRR.

**Double Glass, 120-CELL HALF-CUT SERIES**

**ELECTRICAL PARAMETERS AT STC**

Module Type: BHI-ComV2(BK)	
Maximum Power(Wp)	320W
Open Circuit Voltage(Voc)	81.8 V
Short Circuit Current(Isc)	5.1A
Maximum Power Voltage(Vm)	66.67 V
Maximum Power Current(Imp)	4.8 A
Module Efficiency	22.79%
Maximum Series Fuse	10A
Watts Positive Tolerance	0~+5W
Number Of Diode	3
Standard Test Conditions	1000W/M <sup>2</sup> ,25°C,AM1.5
Maximum System Voltage	1000V/DC (11 in series)
Temperature-Coefficient Isc	+0.043%/°C
Temperature-Coefficient Voc	-0.24%/°C
Temperature-Coefficient Pmpp	-0.30%/°C
Operating Temperature	-40°C...+85°C
Normal Operating Cell Temperature	45±2°C
Load Capacity For The Cover Of The Module (Glass)	5400Pa(IEC61215)(snow)
Load Capacity For The Front & Back Of The Module	2400Pa(IEC61215)(wind)

**ELECTRICAL CHARACTERISTICS WITH 10% SOLAR IRRADIATION RATIO**

Module Type: BHI-ComV2(BK) Maximum	
Power(Wp)	320W
Open Circuit Voltage(Voc)	81.8 V
Short Circuit Current(Isc)	5.1 A
Maximum Power Voltage(Vm)	66.67 V
Maximum Power Current(Imp)	4.8 A
Irradiation Ratio (Rear/Front)	10%

\*Bifaciality=Pmax,Rear/Rated Pmax,Front

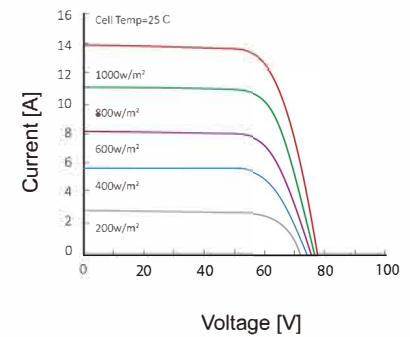
**MECHANICAL CHARACTERISTICS**

Front/Back Cover (Material / Thickness)	low-iron tempered glass 2.0 / 2.0 mm
Cell (Quantity / Material / Dimensions)	120(6x9x2) / monocrystalline silicon,bifacial
Frame (Material / Color)	aluminum hollow-chamber frame on each side anodized aluminum alloy / Black
Junction Box (Protection Degree)	≥IP68
Cables & Plug Connectors	4mm <sup>2</sup> , 300mm in length,length can be customized
Module Dimensions (L / W / H)	1665x1002x36mm
Module Weight	16.5 kg
Application Class	Class A
Electrical Protection Class	Class II
Fire Safety Class	Class A

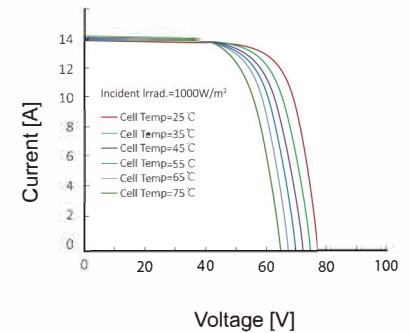
**PACKING**

Container Size	Units/Pallet (PCS)	Weight/Pallet (KG)	Pallet Measurement (in)	Units/Container (PCS)
40HQ	36	594	69"x44"x45"	450

**CURRENT-VOLTAGE CURVES:**



Module characteristics at constant module temperatures of 25°C and variable levels of irradiance



Module characteristics at variable module temperatures and constant module irradiance of 1.000 W/m<sup>2</sup>

**MODULE DIAGRAM:**

